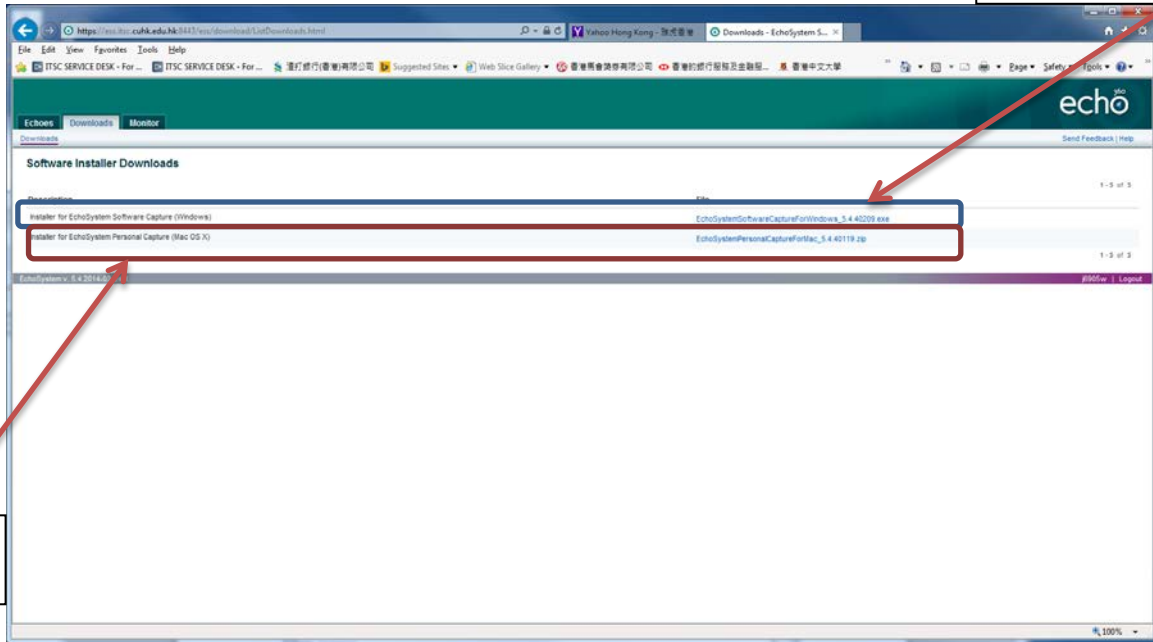


A. Procedures to download and install the software

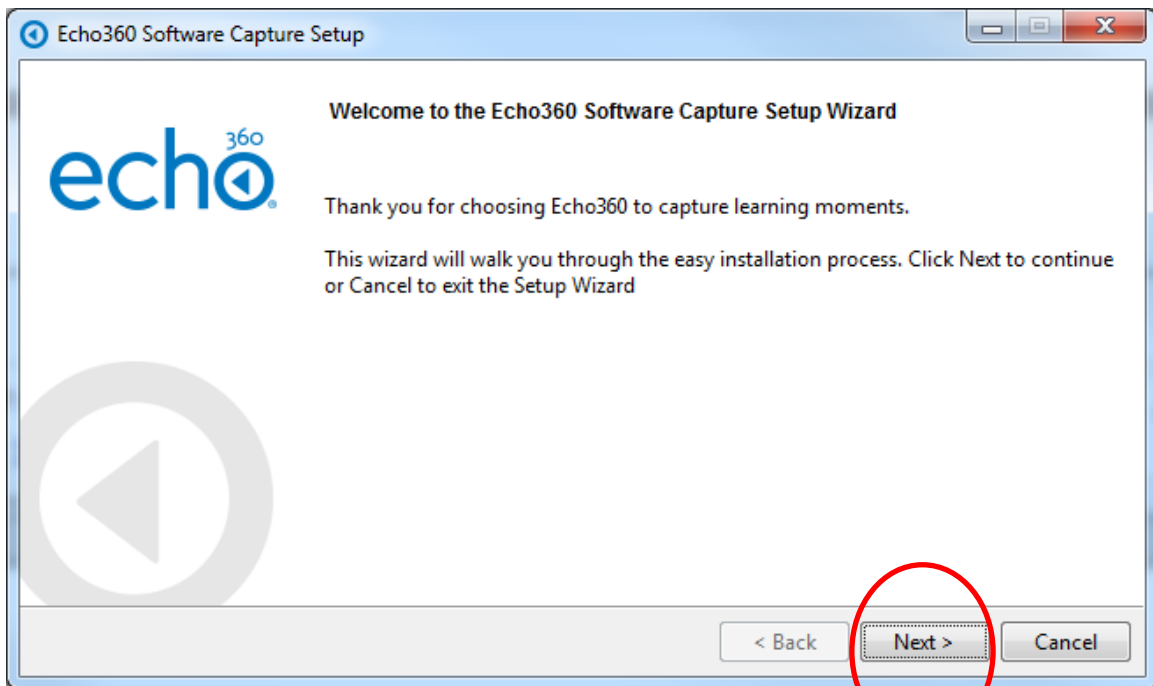
Login to ESS server with the link <https://ess.itsc.cuhk.edu.hk:8443> and then download the program for installation.

For Windows PC

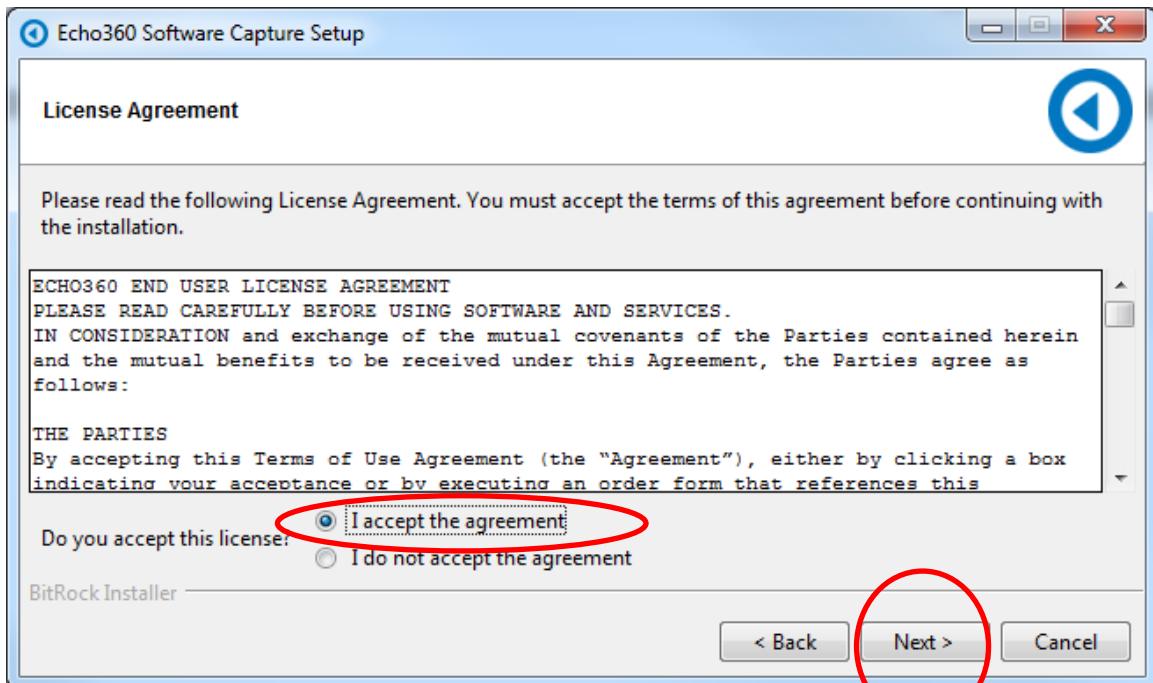
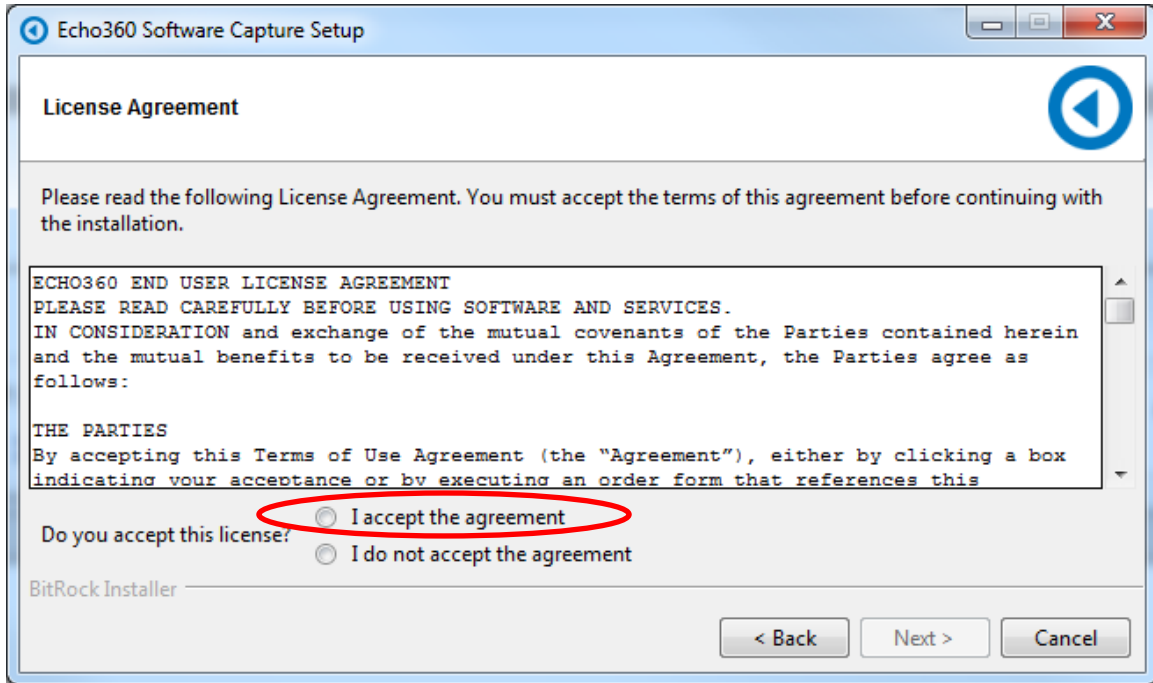


For Mac

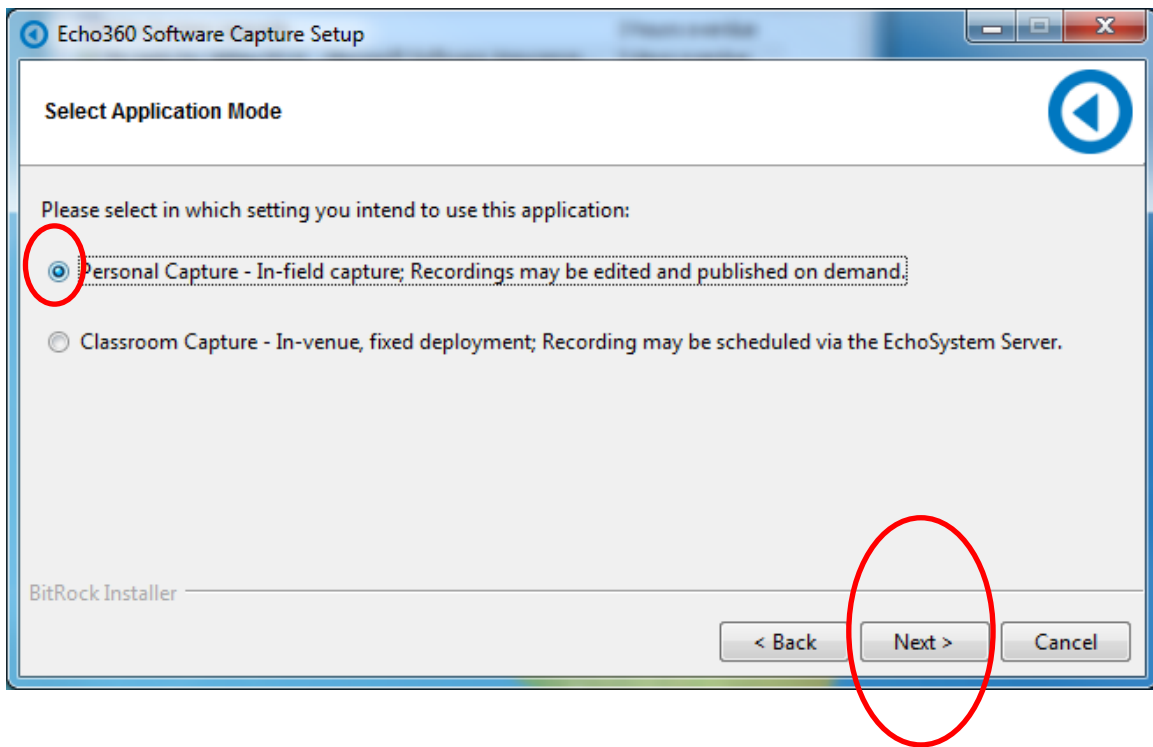
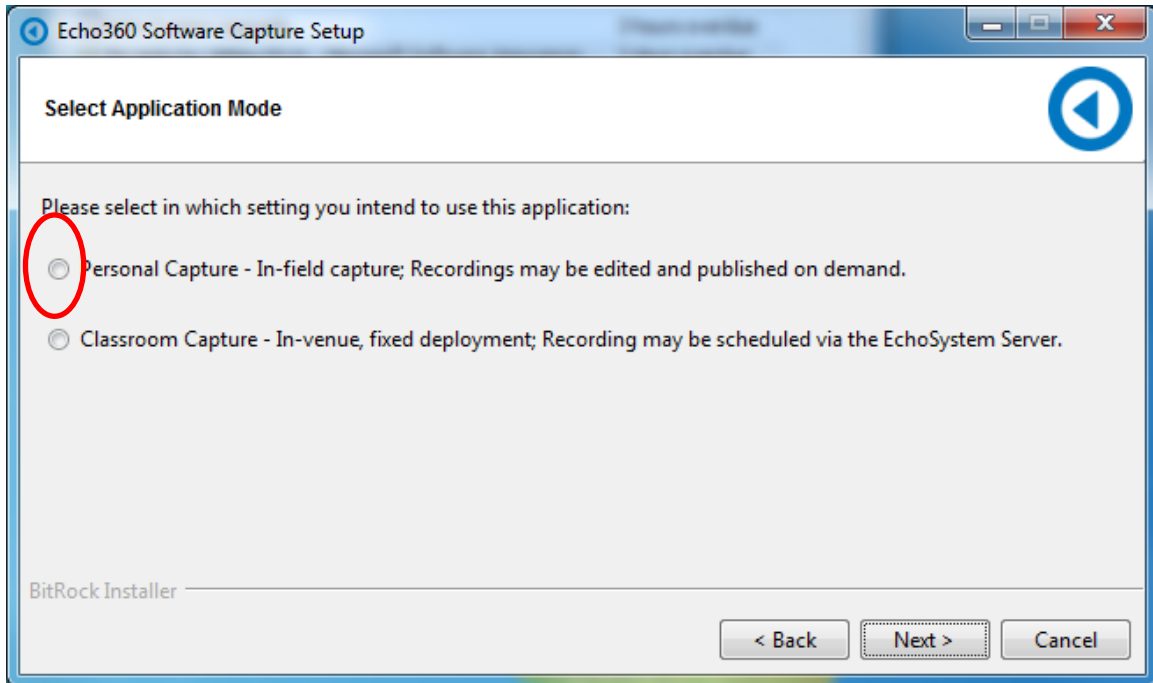
Click the downloaded program for installation and click the Next button



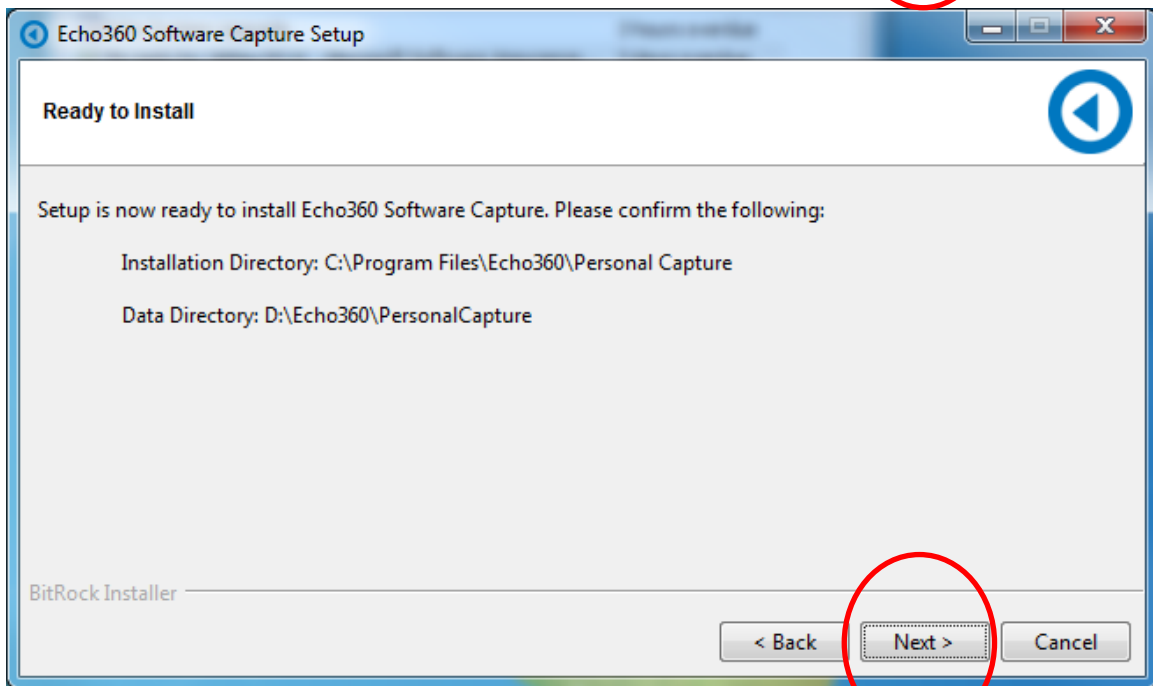
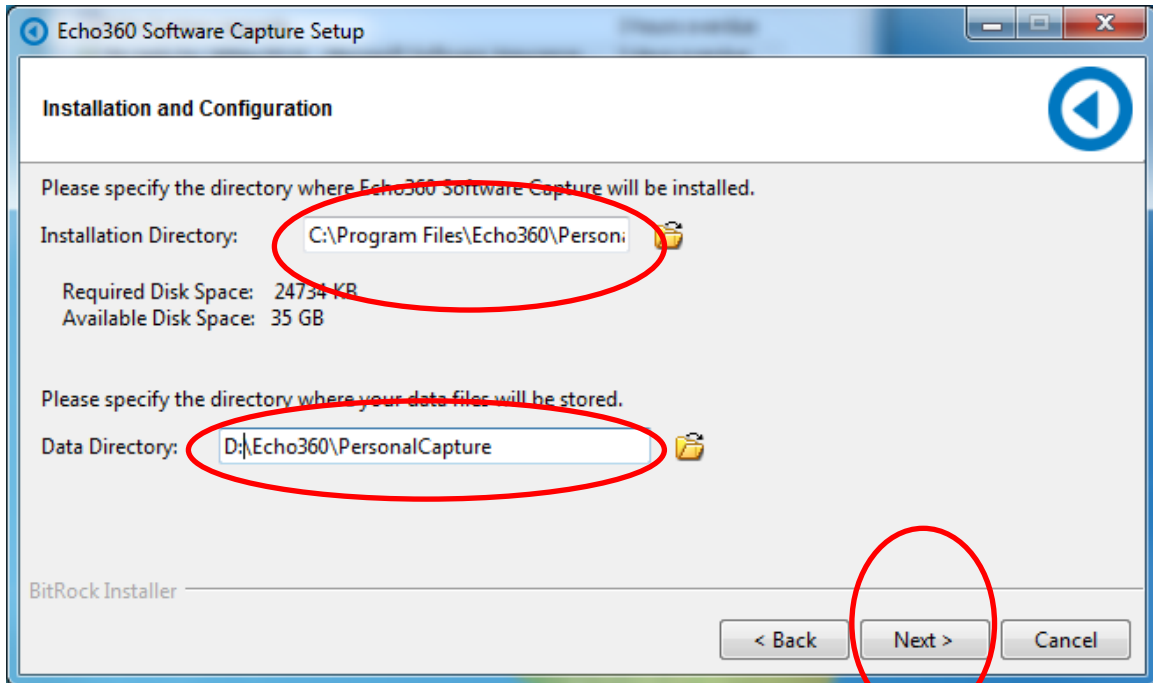
Check the "I accept the agreement" and click the Next button



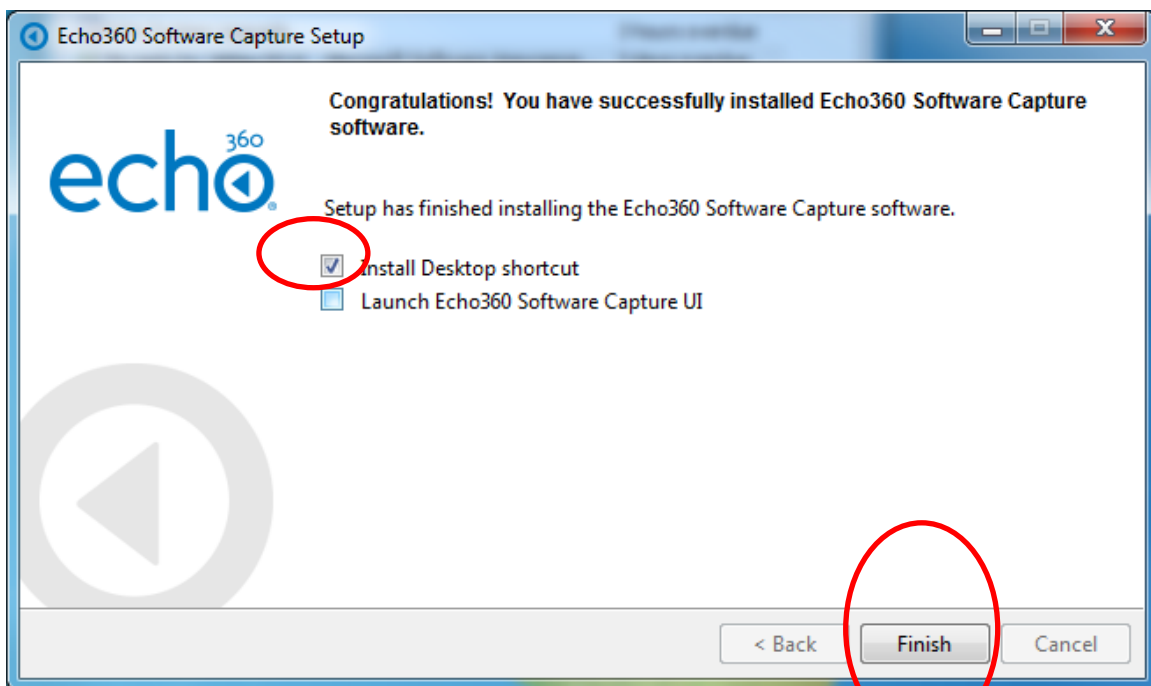
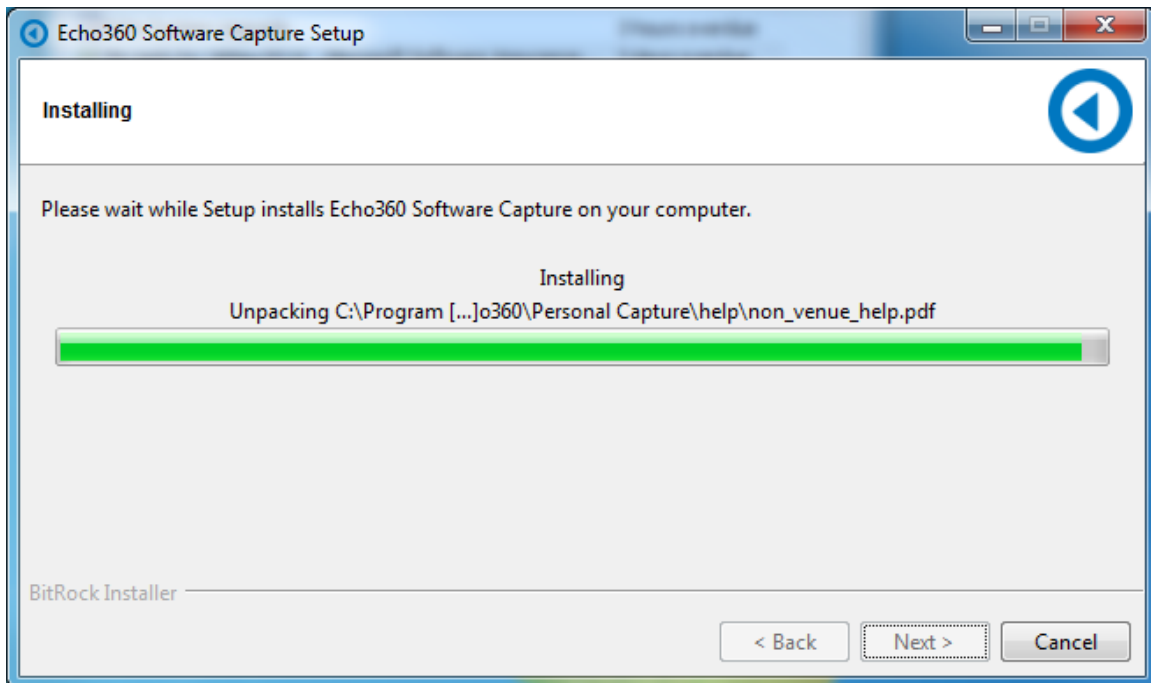
Click the Personal Capture and then click the Next button



Set the Data Directory to D:\Echo360\PersonalCapture and then click the Next button



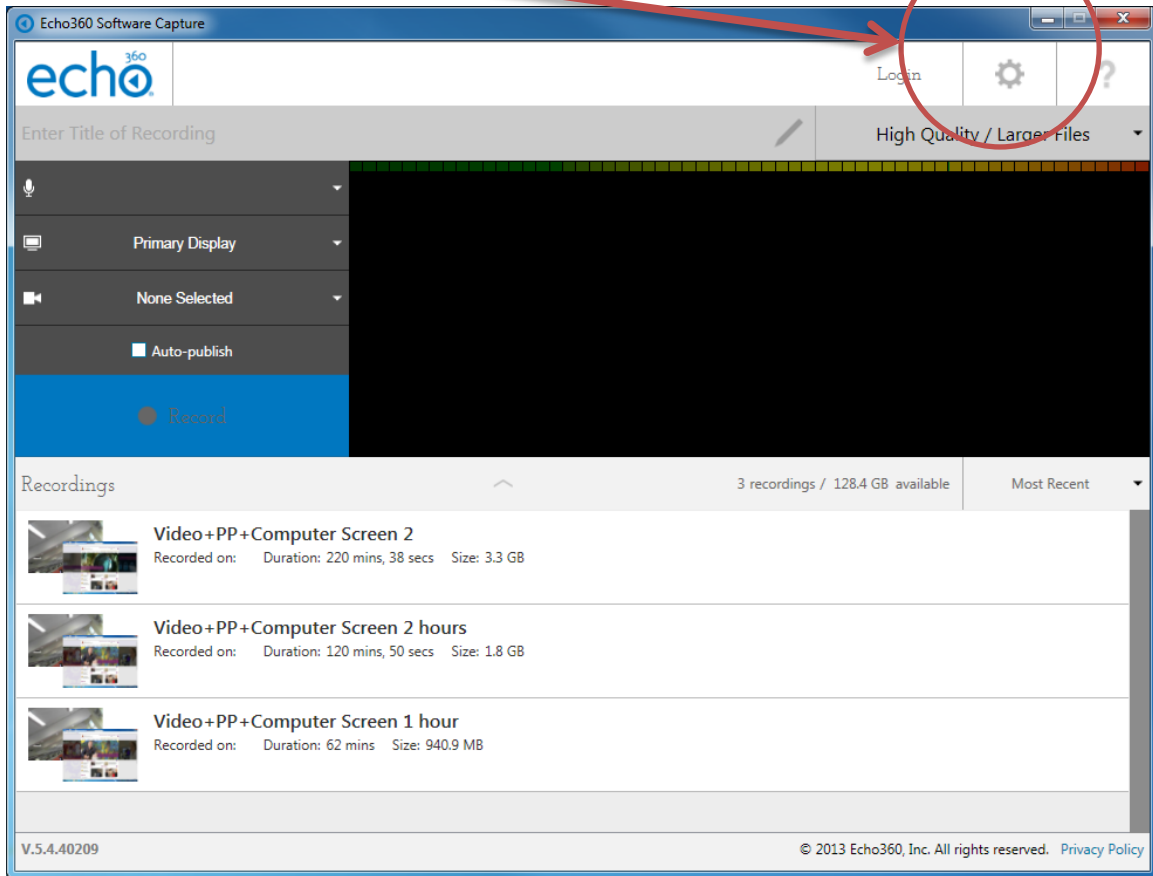
Click the "Install Desktop shortcut" checkbox and then click the Finish Button



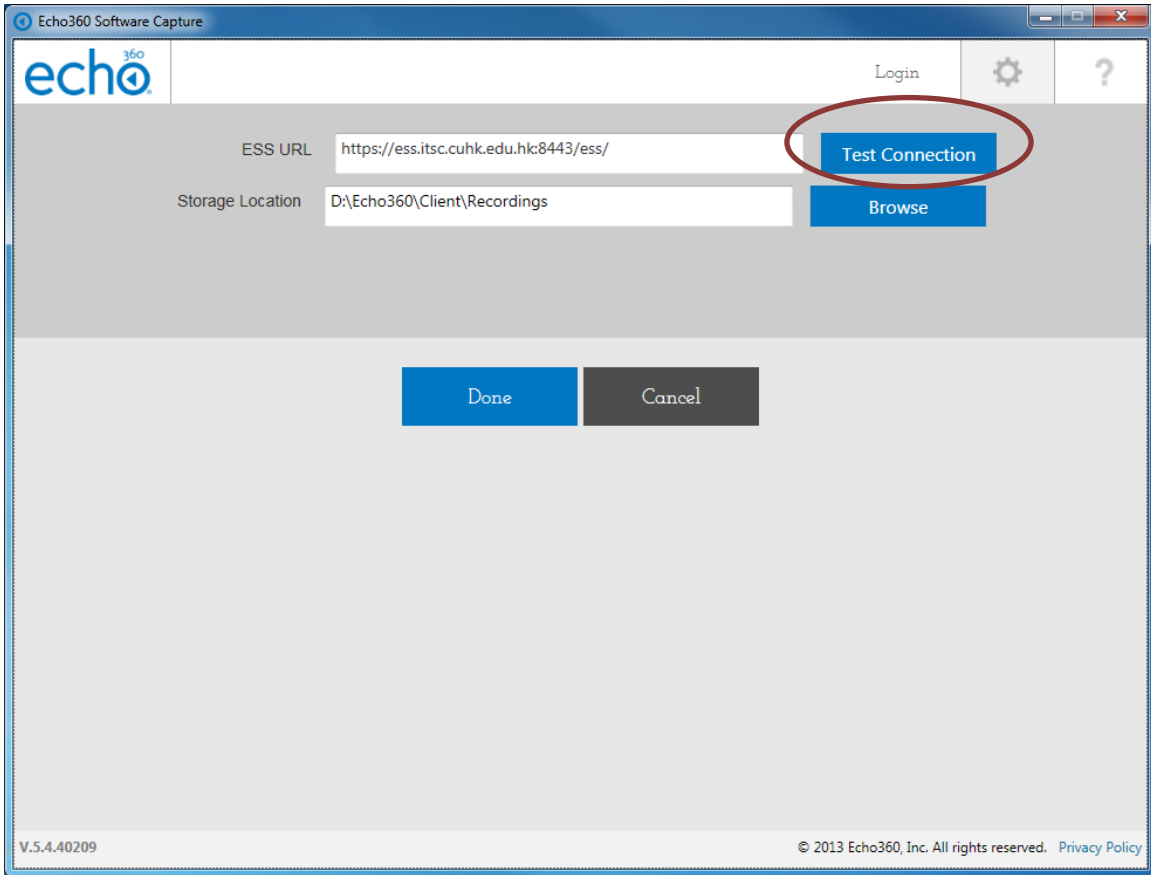
B. Test of network connection.

Click the Echo360 Software Capture icon on the desktop to startup the program

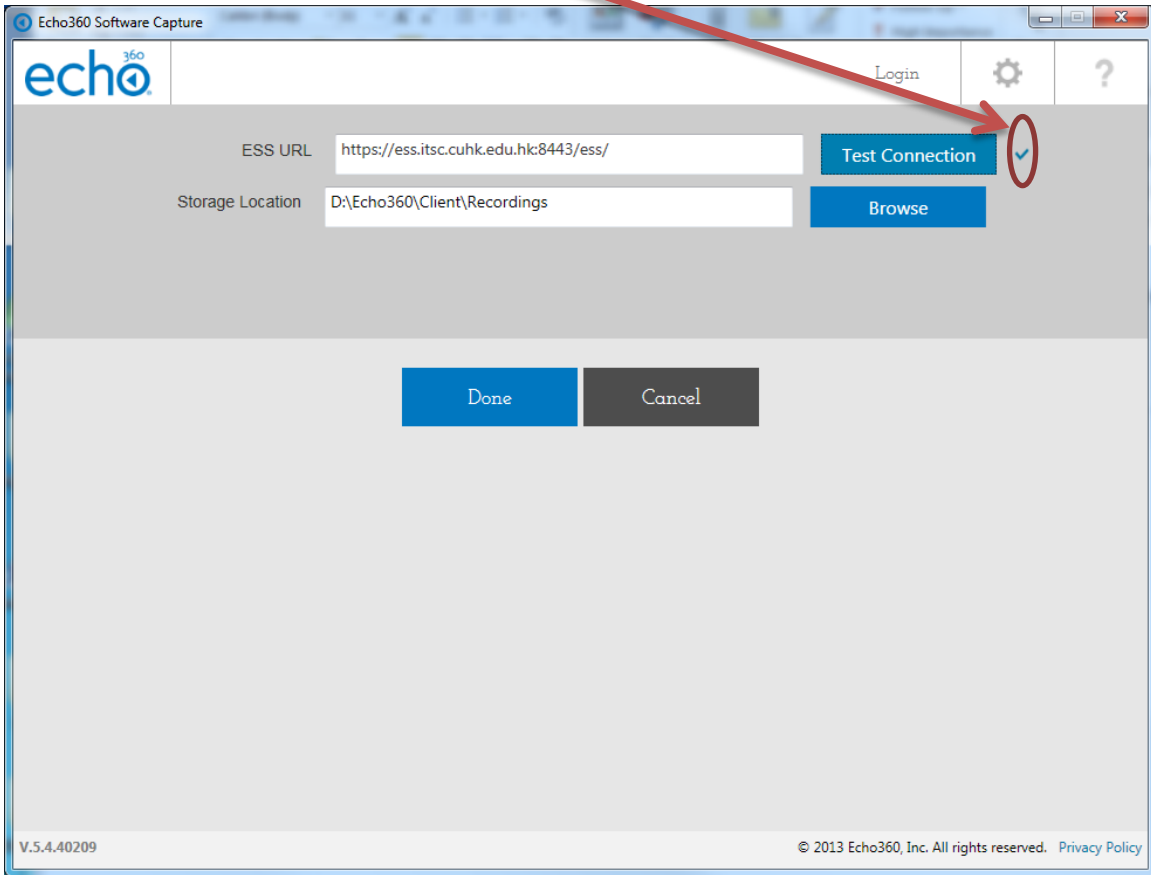
Click the Settings button



To test the connection, click the wheel icon beside the Login button and click the “Test Connection”

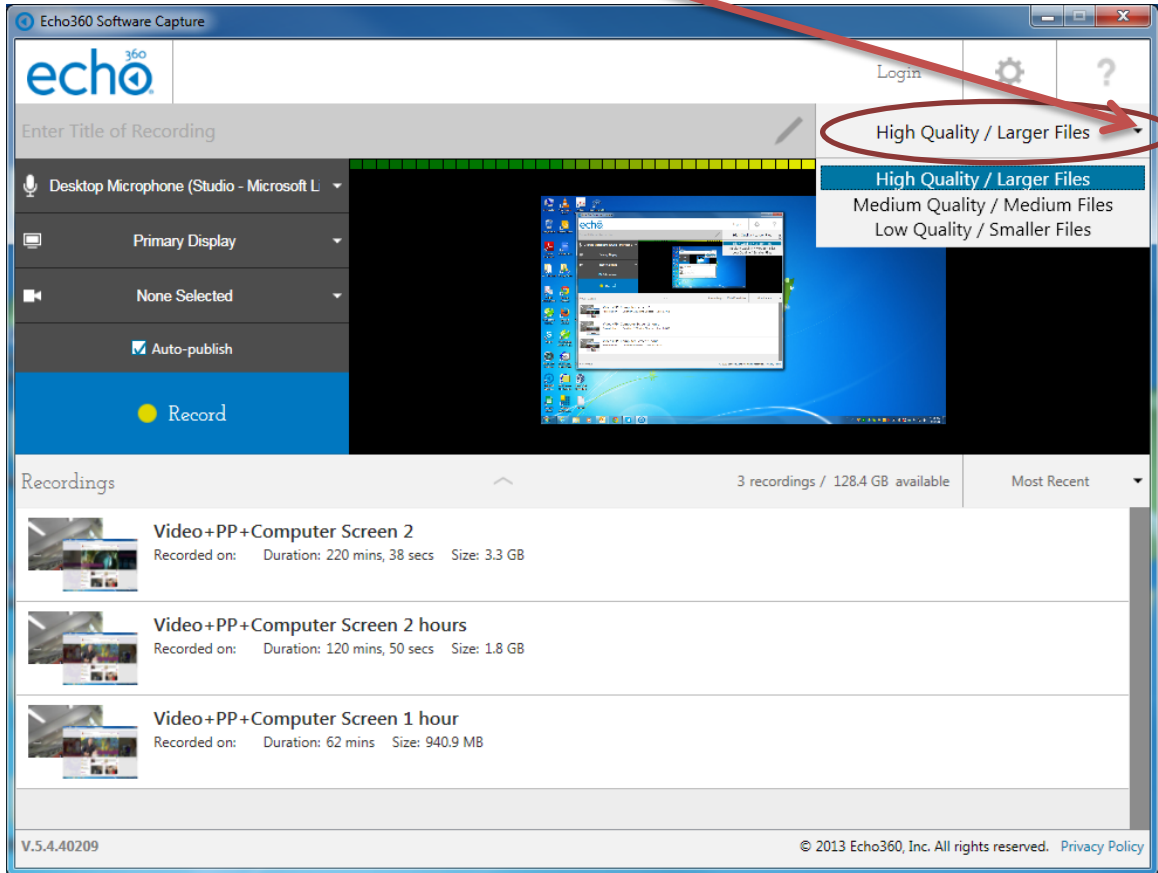


If the “Test Connection” is successful, a “check” mark should be displayed besides the button.



C. To change the recording quality

To select the recording quality, select the “High Quality / Large Files” dropdown box



D. To change the recording settings

Select Input for Recording

Software Capture allows you to record up to three inputs, as follows:

Audio only (A) - capturing only audio input. This generates an MP3 file for students to listen to.

Audio and Video (A/V) - capturing sound and video input from the built in or USB-connected video camera.

Audio and Display (A/D) - capturing sound and whatever is shown on the computer screen.

Audio, Display, and Video (A/D/V) - capturing sound, the display on the computer screen, and video input.

Audio and Dual Video (A/V/V) - capturing sound and the input from two different video sources.

Note the following about Audio input:

You cannot choose **None Selected** for audio input; audio is always captured.

You can use the internal microphone, an externally attached microphone, or a microphone on an externally attached camera if there is one.

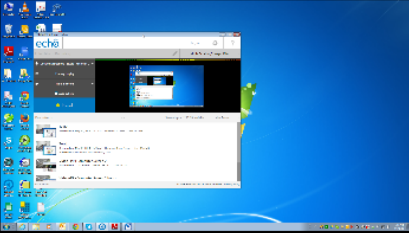
You **MUST** have at least one audio input. Software capture will not allow you to record without audio.

Echo360 Software Capture

echo³⁶⁰ Login [Settings] [Help]

Enter Title of Recording High Quality / Larger Files

Desktop Microphone (Studio - Microsoft L) Primary Display None Selected Auto-publish Record



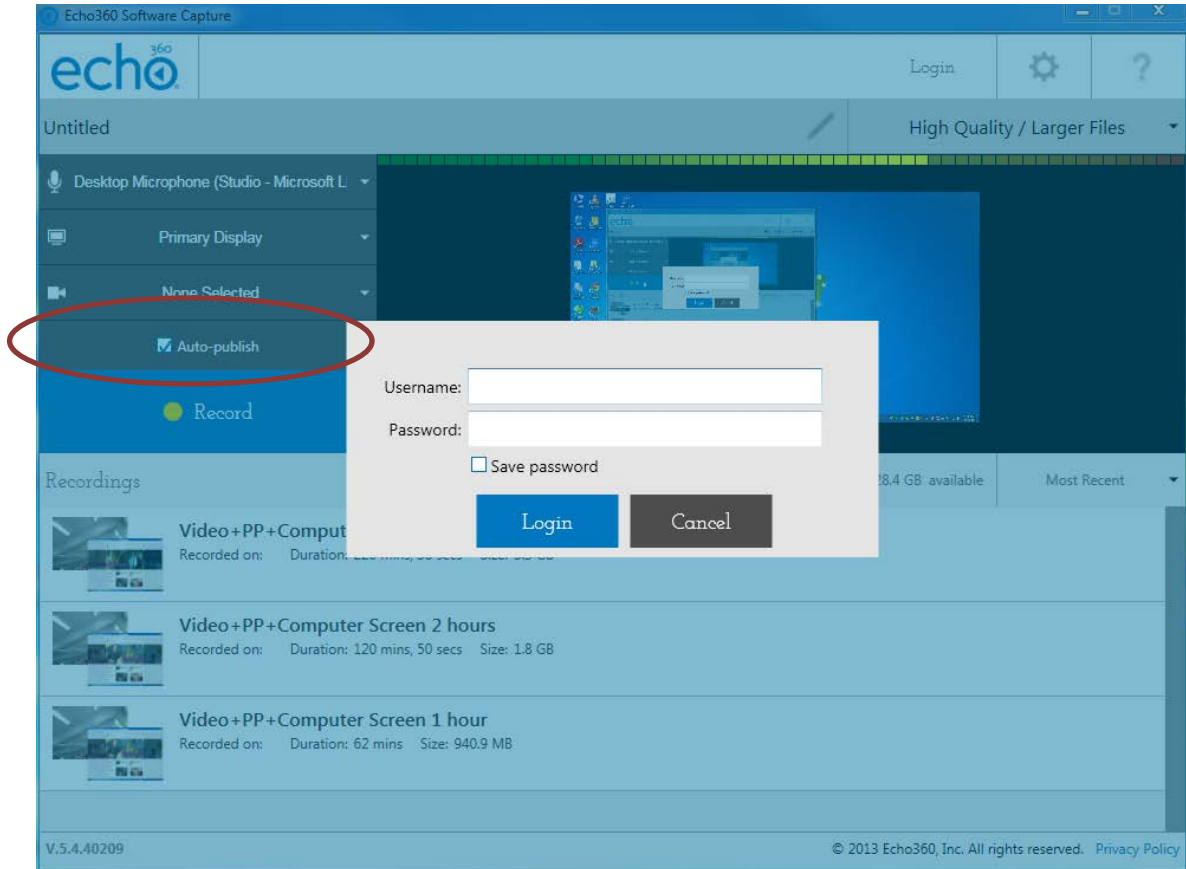
Recordings 5 recordings / 128.3 GB available Most Recent

- Test2**
Recorded on: May 19, 2014 11:51 AM Duration: 47 secs Size: 13.3 MB
- Test1**
Recorded on: May 19, 2014 11:49 AM Duration: 1 min, 5 secs Size: 15.6 MB
Published to: test-edman (test-edman---) users
- Video+PP+Computer Screen 2**
Recorded on: Duration: 220 mins, 38 secs Size: 3.3 GB
- Video+PP+Computer Screen 2 hours**

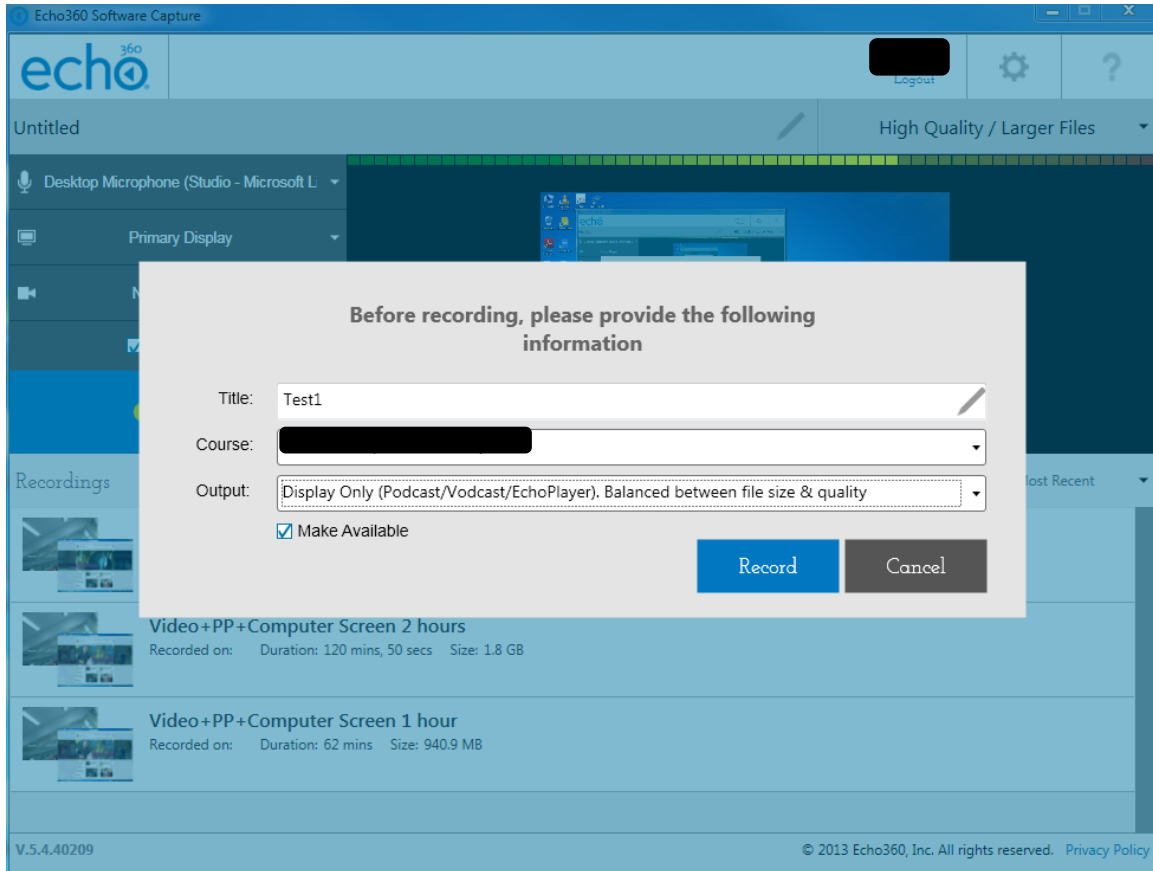
V.5.4.40209 © 2013 Echo360, Inc. All rights reserved. [Privacy Policy](#)

E. Recording with auto-publish on

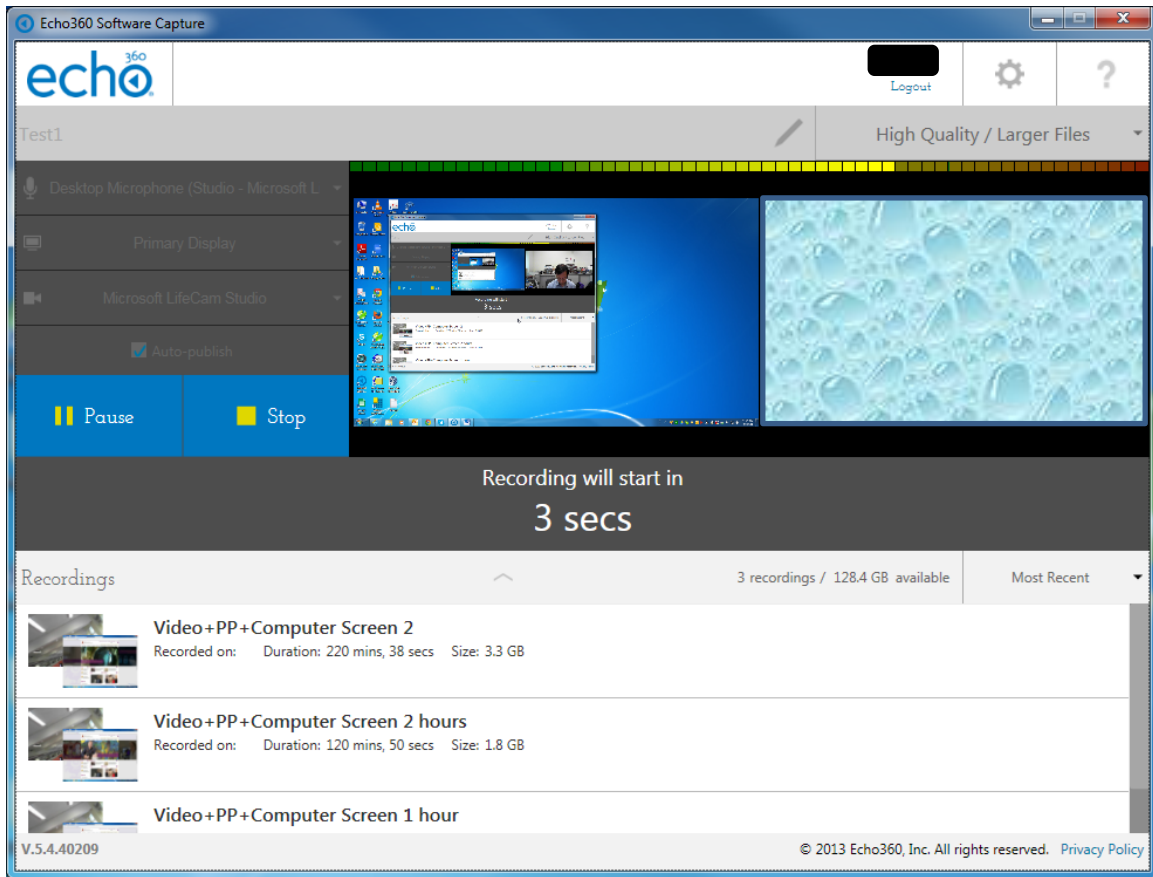
If you have selected Auto-publish, you have to login with staff id and CWEM password



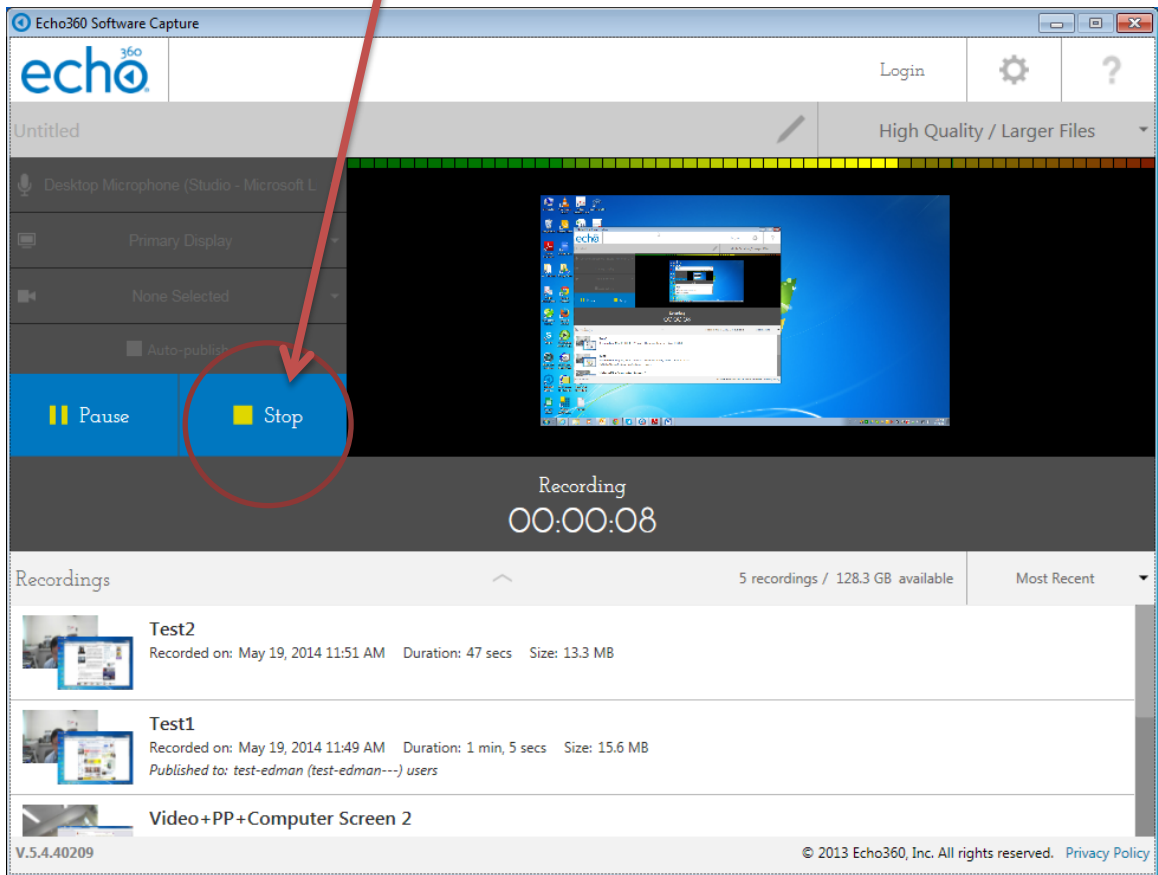
Type in the title name, select course title, output format and select the “Make Available” checkbox before clicking the Record button



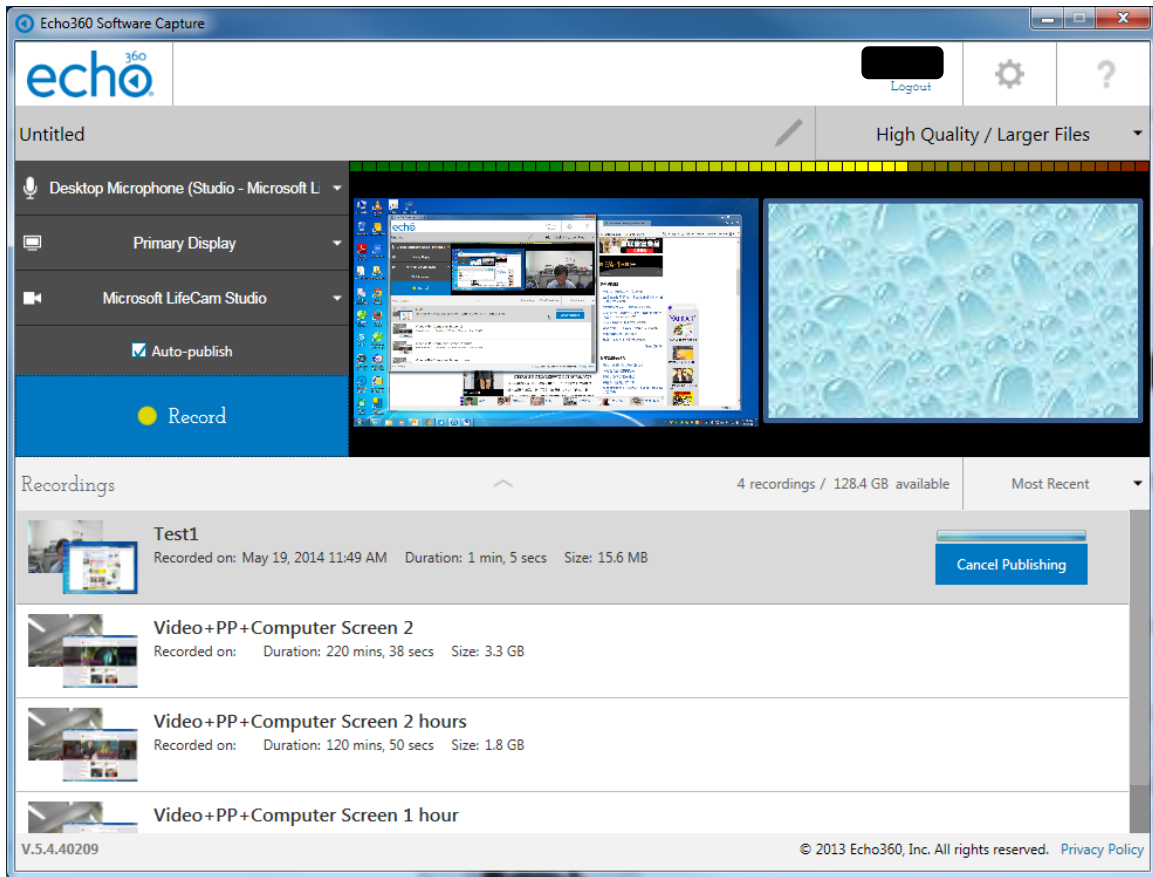
When you click the “Record” button, the recording will start in 5 secs and the program icon will turn to red color and minimize in the task bar.



To stop recording, click the "Stop" button

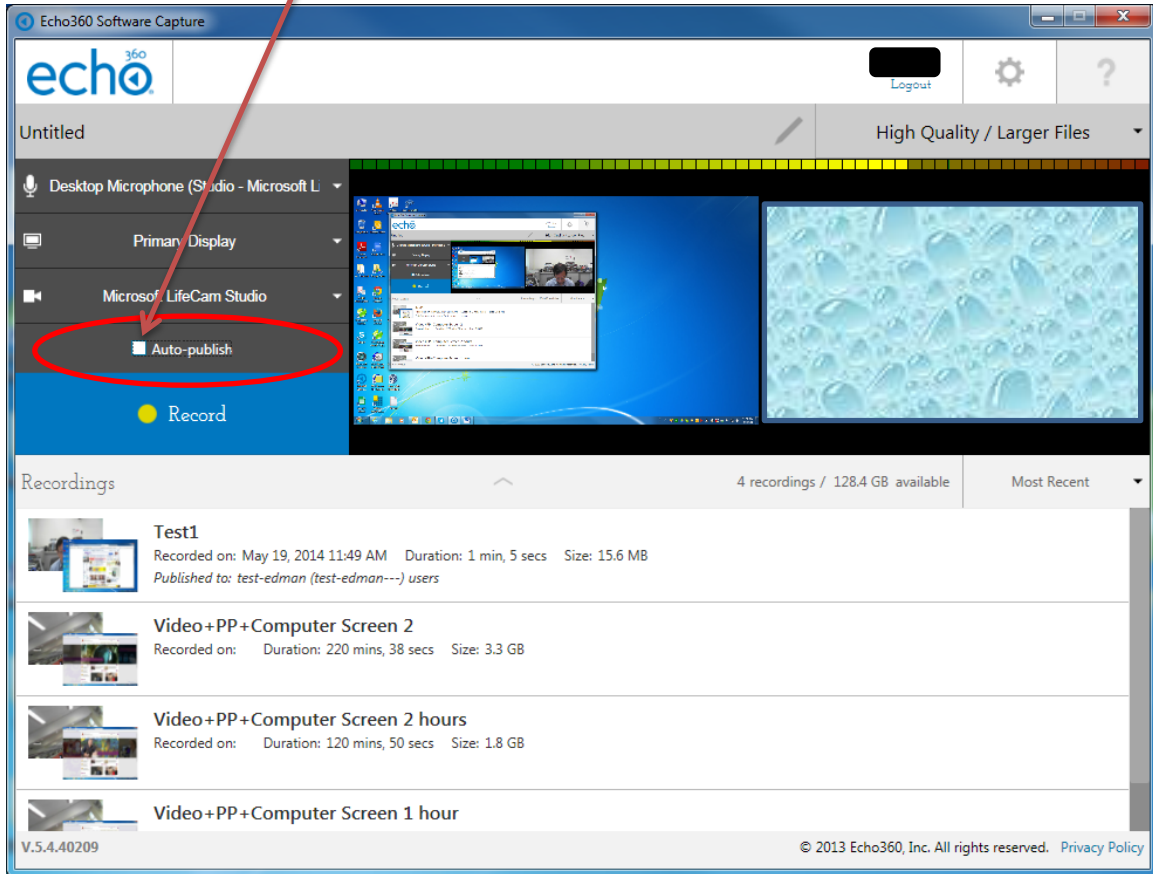


If the “Auto-published” option is checked, the recording will be published automatically after clicking the “Stop” button.

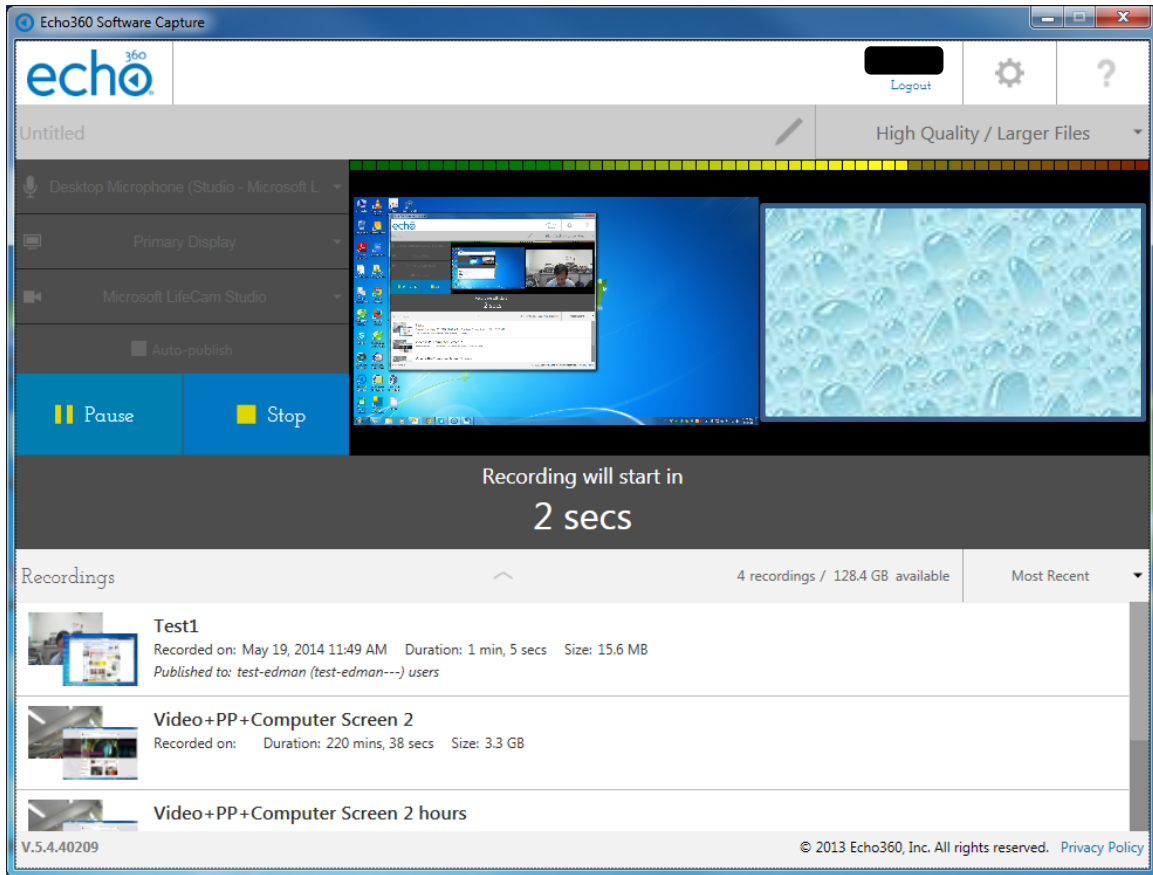


F. Recording with auto-publish off

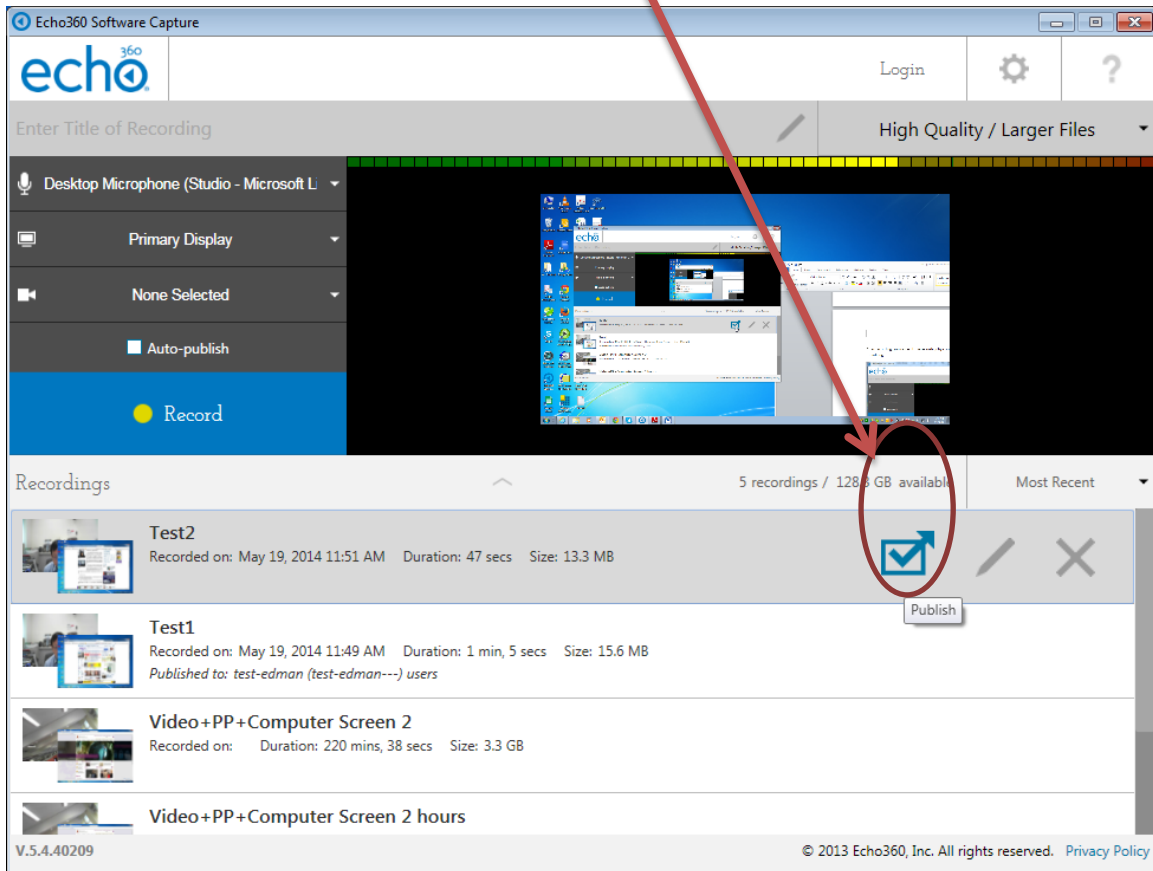
If the “Auto-publish” is unchecked, there is no need to login before recording.



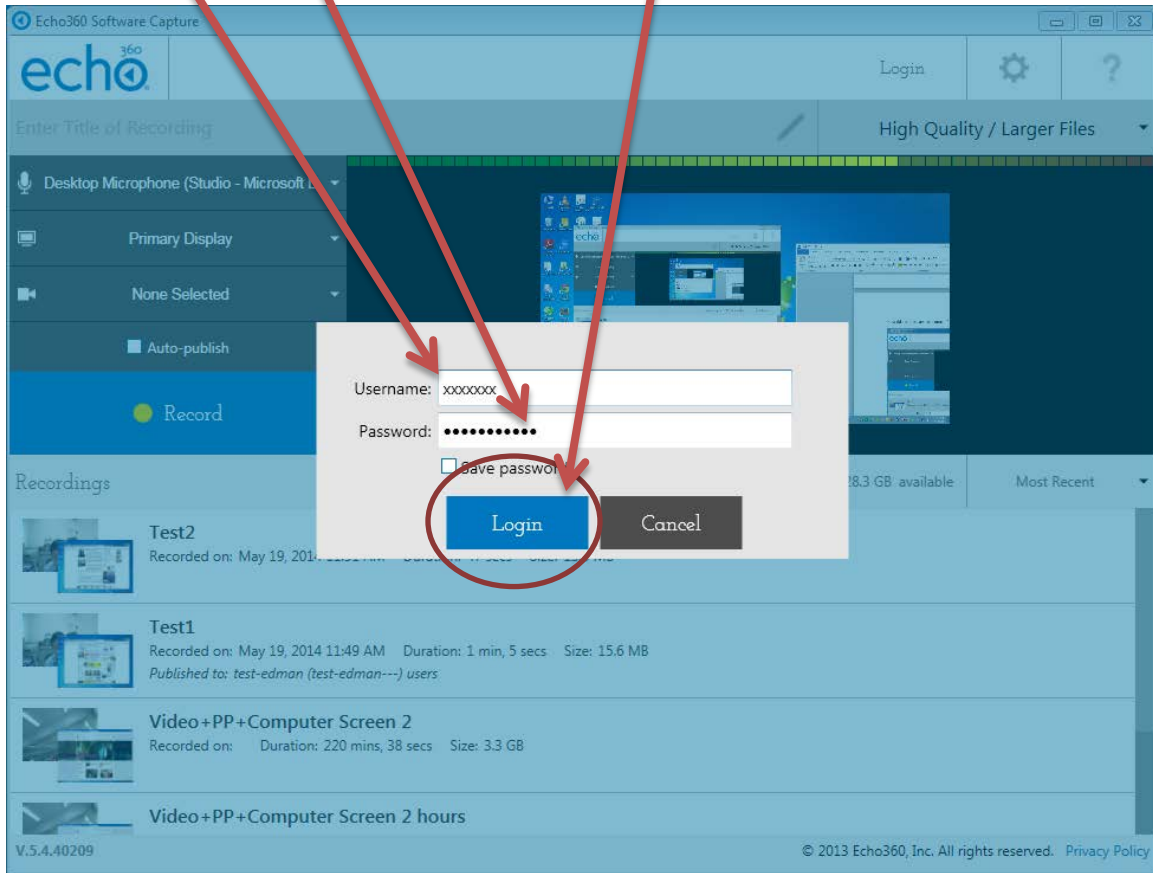
The recording will started automatically in 5 secs after clicking the “Record” button.



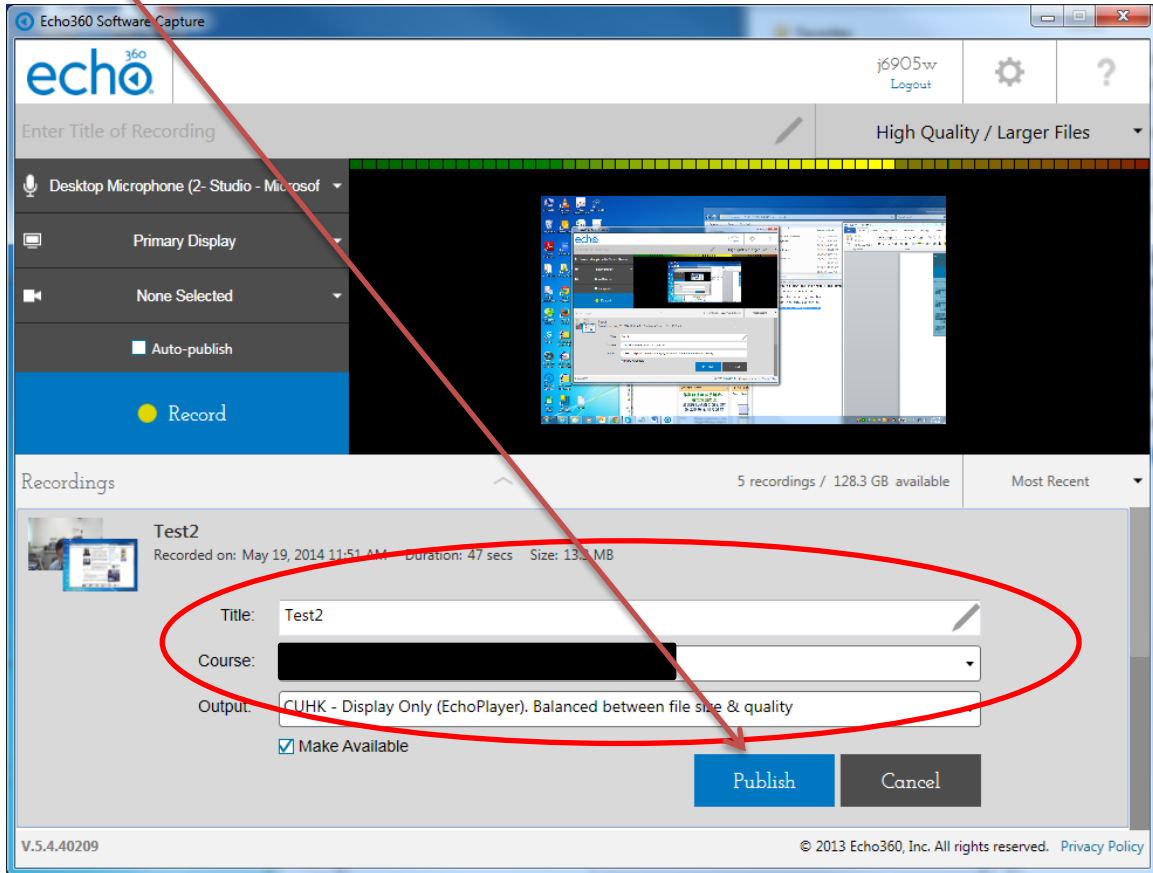
To manually publish the recording, click the “Publish” button besides each recording.



Enter your staff id, CWEM password and click the "Login" button to login

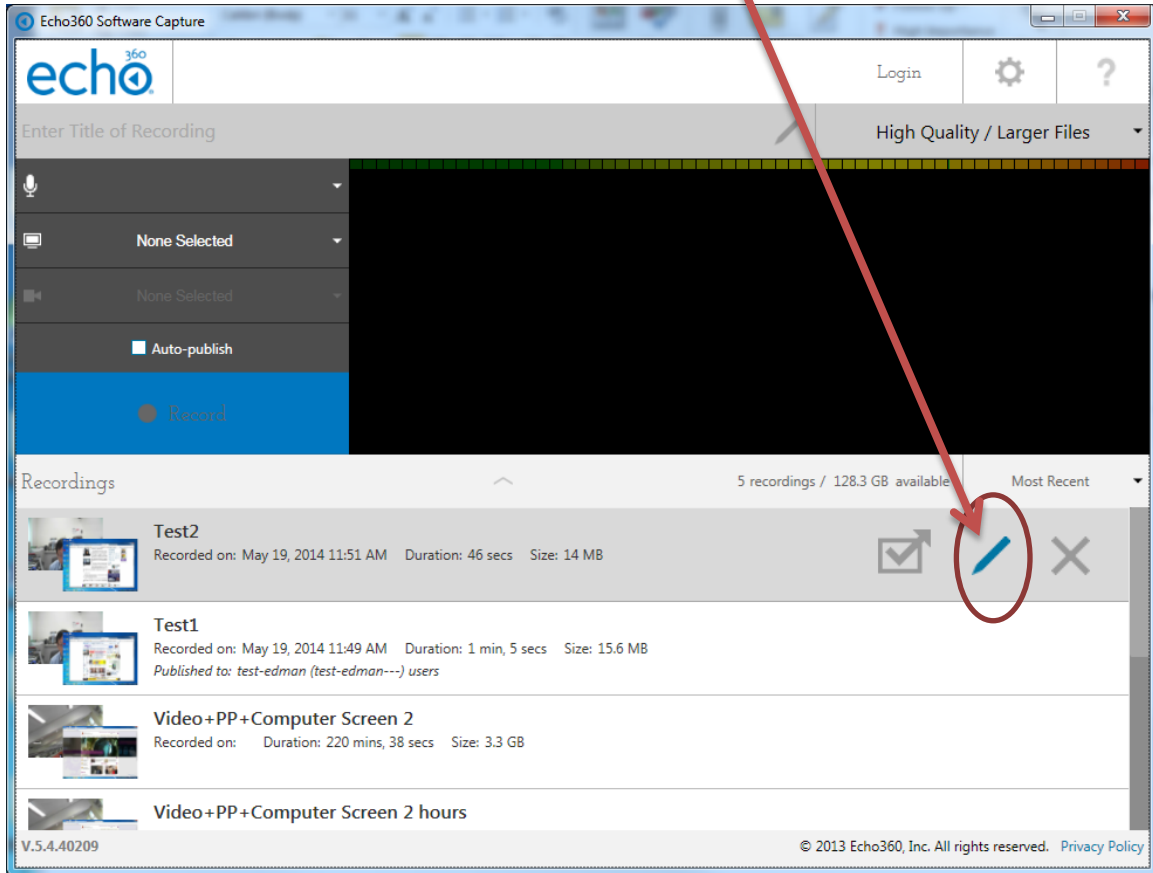


Input title, select course name, output format, check the Make Available button and click the "Publish" button

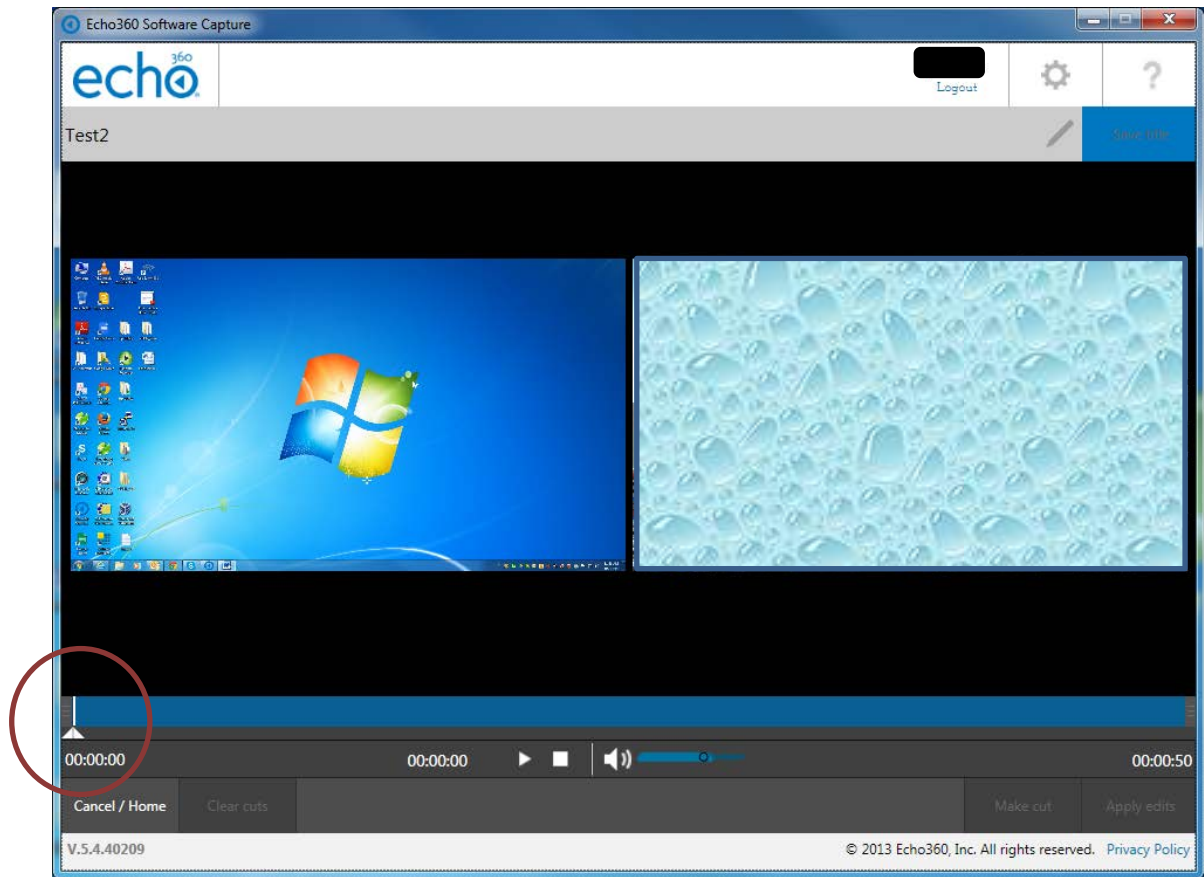


G. Edit/Review recording

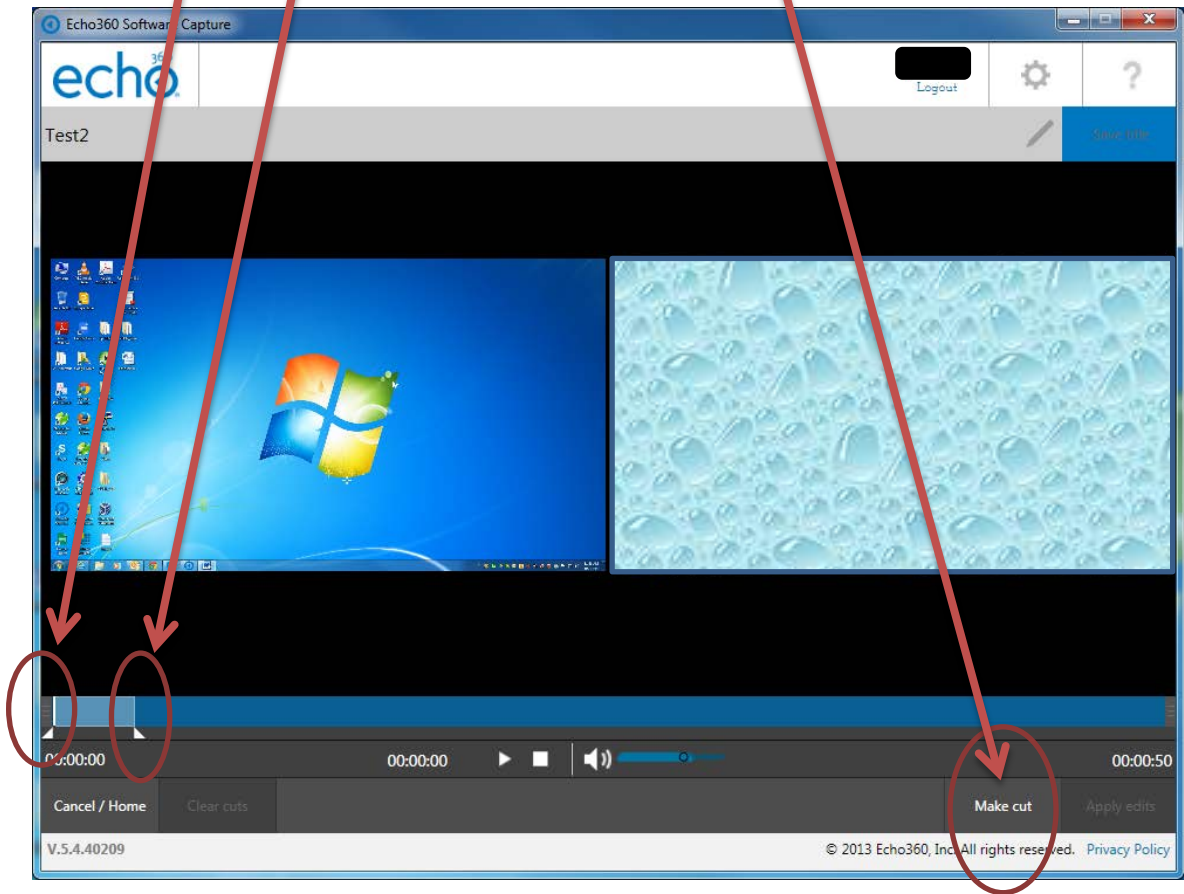
After recording, you can edit the recording by clicking the “Pen” button



Click and drag the two small triangles for the start and end point of a segment.



Select the start and end point of a cut and then click the "Make cut" button



For permanently apply the changes, click the "Apply edits" button

Click "Yes" button to apply the changes

