

## Student Profile and Student Support Services at CUHK

Raymond Leung  
Director of Student Affairs

Sept 2012



## Number of students in CUHK



	Full-time	Part-time	Local	Non-local	TOTAL
Undergraduate	11,899	-	10,436	1,463	11,899
Postgraduate	5,226	6,795	8,541	3,480	12,021
<b>TOTAL</b>	<b>17,125</b>	<b>6,795</b>	<b>18,977</b>	<b>4,943</b>	<b>23,920</b>

Non-local students come from 40 overseas  
countries and regions outside Hong Kong

(As at Sept 2011)

## Students' Background – Local Students



- ※ Average age: 19
- ※ Male to female ratio: 1 to 1.2
- ※ 22.2% of fathers and 14.7% of mothers received tertiary education
- ※ 80% of fathers and 44.4% of mothers in full-time employment

(From 1st year student survey 2011-12)



## Students' Background – Local Students



- ※ Family household income per month:
  - 25.5% : \$10,000 - \$19,999
  - 18.8% : \$20,000 - \$29,999
  - 9.2% : \$4,000 - \$9,999
  - 9.0% : \$30,000 - \$39,999
  - 5.9% : \$40,000 - \$49,000
- ※ Private housing: 49%; Public housing: 47.6%  
(51.3% do not have their own rooms at home)

(From 1st year student survey 2011-12)



## Study matters – Local Students



- ※ Factors affecting choice of major subjects
  - interest in subject (86.8%)
  - personal goal (52.1%)
  - exam results (46.5%)
  - career prospect (45.8%)
  
- ※ Self-assessed weakness
  - computer knowledge (23.9%)
  - Putonghua (22%)
  - creativity (15.6%)
  - listening and speaking English (14.8%)
  - leadership skill (14.8%)

(From 1st year student survey 2011-12)



香港中文大學  
The Chinese University of Hong Kong

## Study matters – Local Students



- ※ Anticipated difficulties in university life
  - attaining course requirements (36.5%)
  - adapting to the university teaching method (35%)
  - participating actively in extra-curricular activities (27%)
  - understanding and using English (23.8%)
  
- ※ 40.8% of students indicated they need guidance
  - study matters (82.9%)
  - career development (78%)
  - personal growth (47.3%)
  - Interpersonal relationship (36.5%)

(From 1st year student survey 2011-12)



香港中文大學  
The Chinese University of Hong Kong

## Students' Background – Mainland Students



- ※ Average age: 18
- ※ Male to female ratio: 1 to 1.2
- ※ 33.4% of students on scholarship  
66.6% fee-paying
- ※ 89.3% of fathers and 81.4% of mothers received tertiary education
- ※ 90.4% of fathers and 80.1% of mothers in full-time employment

(From 1st year student survey 2011-12)



## Study matters – Mainland Students



- ※ Factors affecting choice of major subjects
  - interest in subject (69.4%)
  - personal goals (59.1%)
  - potential career opportunities (50.5%)
  - exam results (41.2%)
- ※ Self-assessed weakness
  - using Cantonese (87.6%)
  - computer knowledge (45.1%)
  - listening and speaking English (20.6%)
  - English vocabulary (17.9%)

(From 1st year student survey 2011-12)

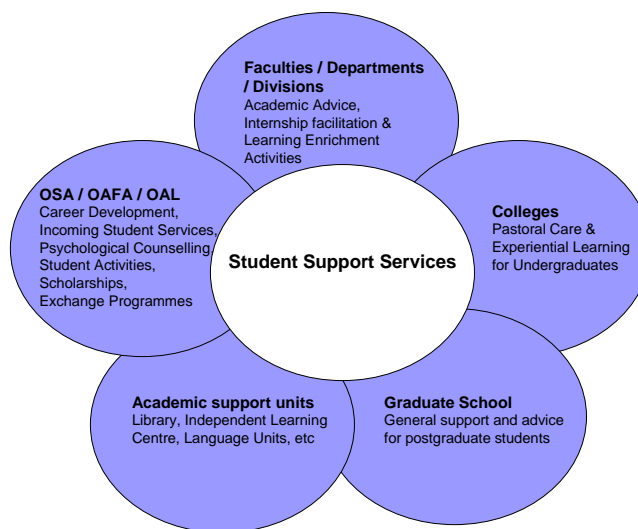


## Study matters – Mainland Students

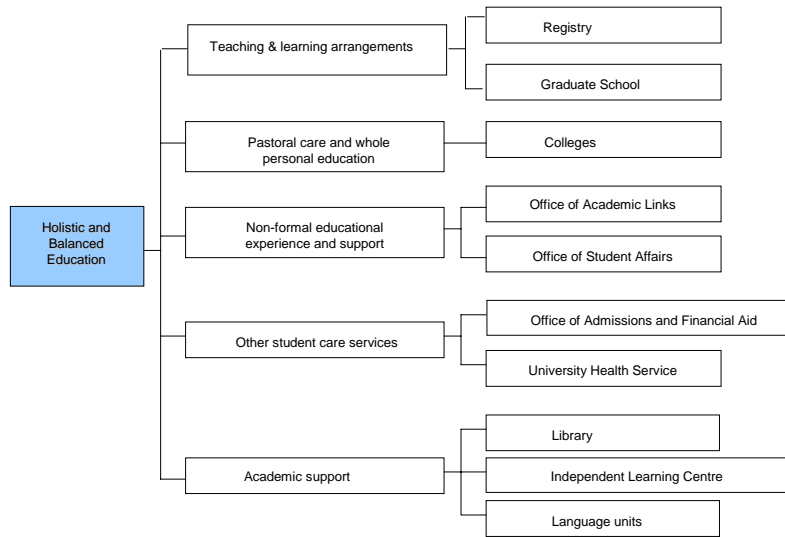
- ※ Anticipated difficulties in university life
  - understanding and using English (41.9%)
  - adapting to teaching methods (29.2%)
  - finance (14.8%)
  
- ※ Need support in
  - career development (55.3%)
  - leadership skills (55.3%)
  - language training (40.6%)
  - academic adjustment (37.1%)

(From 1st year student survey 2011-12)

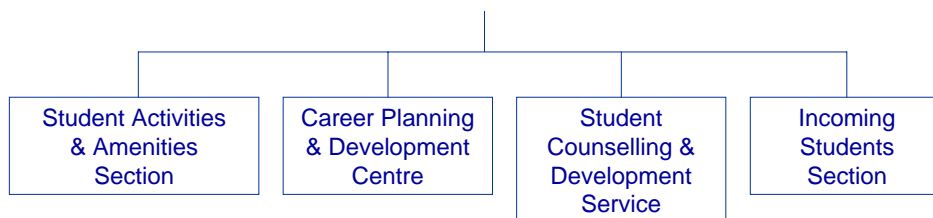
## All-round Student Support and Development



## Non-academic Support for Students



## Office of Student Affairs





## 1. Student Activities and Amenities Section

- Coordinating new student orientation activities
- Coordinating student activities and developmental programmes
- Managing student amenities in Staff-Student Centres and the Swimming Pool
- Liaison with and providing guidance to student bodies
- Enhancing communication between the University and students



## 2. Incoming Students Section

- Providing guidance and support to non-local students
- Learning enhancement service (LEO)
- Managing the International House and providing other accommodation-related support
- Organizing cultural diversity programmes



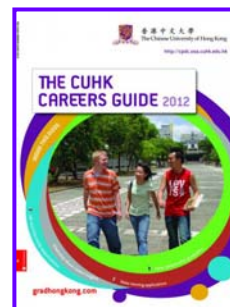
### 3. Student Counselling and Development Service

- Providing psychological counselling services to students - *Adjustment, studies, interpersonal, psychosocial problems*
- Organizing self-enhancement programmes for students
- Promoting mental health education and positive psychology
- Offering training for student affairs colleagues in other units



### 4. Career Planning and Development Centre

- Providing job placement services
- Organizing career guidance and enrichment programmes
- Supporting employers' recruitment exercises
- Organizing summer internship programmes





## Other student support units/offices

- Office of Admissions and Financial Aid
- Office of Academic Links
- Registry
- Graduate School Office
- University Health Service
- Colleges



## Academic advisors and students' whole-person development

- Advisors provide guidance and advice to students in academic-related matters
- Advisors can become resource persons and provide information on other aspects of whole-person development and related services to students
- Advisors to make referrals to suitable units for follow-up



## Operational Guidelines



### OSA Website

- Handbook on Academic Advisory System
- Handling problematic & critical cases
- Managing psychological/psychiatric disturbances
- Handling suicidal risks
- Referral to the student counselling team at OSA
- Handling emergency situations for non-local students

Thank you

