

## Academic Advisory System in the Faculty of Business Administration

Prof. Andrew Yuen  
Assistant Dean  
CUHK Business School

### Background

1. Business School
  - 2 schools and 4 Departments
  - 10 undergraduate programs; 31 graduate programs (10 MBA/EMBA; 15 Master, MSc and MPhil; 6 PhD)
2. Students
  - Students are less “matured”
  - Concerns about the students’ linkage between the university and the workplace



## Progress of Academic Advisory System in Business School

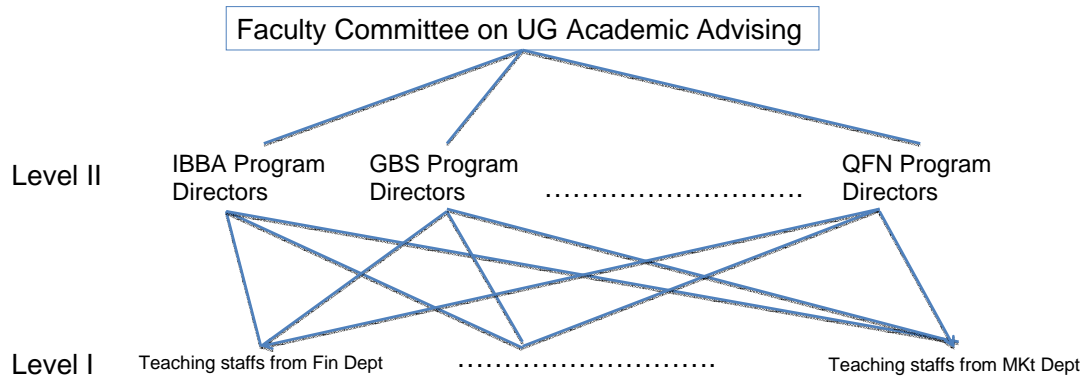
- The Senate approved the Academic Advisory System in December 2011
- The Faculty Committee on Undergraduate Academic Advising has been in place to supervise the implementation of the system in Business School
- Level II advisors have been confirmed in the first meeting of the Committee
- We are assigning Level I advisors to our students, and expect to complete the process next week



## Potential issues in the Academic Advisory System in Business School

1. Large number of undergraduate and postgraduate students
  - 3,400 undergraduate students
  - 1,100 graduate students⇒ Large student-teacher ratio: 1 to 40
2. Heterogeneous student background
  - PG vs UG Students
  - Local vs Non-local students
  - Students with different majors/ concentrations
3. Concerns from teachers
  - Workload
  - Lack of expertise in counseling
  - Overlapping resources with other university units

## The structure of Academic Advisory System in Business School



## Principle of student assignment at Level 1

Year 1 students:

- Our UGO teaching staffs

Year 2 or above students:

- Assign students to their respective concentrations/ majors
- Take into account teacher-student ratio among Departments



## Problems from students

1. Academic problems
2. Career advising
3. Personal problems



## Suggestions to advisors

- Attend training session offered from university
- Share experiences among colleagues
- You are not expected to answer all students questions
- Have a boundary to avoid affecting your own emotions



## Suggestions to advisors

- Working with students
- Utilize the resources from different University units
- Meeting students in a small group sometimes
- Not only service/responsibility